



**NYU**

**SCHOOL OF GLOBAL  
PUBLIC HEALTH**

# *HEAR THE* **CALLING**



**NEW YORK UNIVERSITY**  
**SCHOOL OF GLOBAL PUBLIC HEALTH**  
**2023 ACADEMIC YEAR**



## “ DEAN’S MESSAGE

I believe healthcare access is a birthright, not a privilege based on race, class, gender or geography. My goal as dean of GPH is to help build a world where all people have safe drinking water, healthy food and affordable housing—right in their own communities.

As an undergraduate research assistant, I realized how critical prevention is to health. Ever since then I’ve been motivated by the idea that we can stop people from getting sick in the first place by impacting conditions where they live, work, play, worship and go to school.

Our faculty and students are at the forefront of research and training around the world to powerfully transform the global health landscape, ensuring equity by working *with* people, not for them or on their behalf.

Public health is full of extraordinary people who are drawn to the field and want to make a difference in the world. If you’ve heard a similar calling, I encourage you to answer it right here at NYU GPH!

*Debra Furr-Holden, PhD, DEAN*

[www](#) Read the full message from Dean Debra Furr-Holden

Our admissions team is ready to help you navigate a path to your public health career. If you’d like to learn more, I encourage you to [join an online information session](#).

# GPH BY THE NUMBERS

**97%**

employed or seeking further education within a year of graduation\*

**150**

courses with flexible scheduling (some online)

**29**

unique nationalities represented in the Fall 2021 student body

**103**

active research projects

[www](#) Learn more about GPH alumni

**2,500+**  
alumni working in 42 countries

**50%+**

of GPH students are international or underrepresented minorities\*

**14**  
global sites

Drawing faculty from  
**11**  
NYU schools



GPH students on the set at CNN's first Global Town Hall on the novel coronavirus.

### Students by degree

**845** MPH • **199** MS   
**48** MA • **33** PhD • **15** DrPH

\*Statistics were generated from the 2021 graduating class.



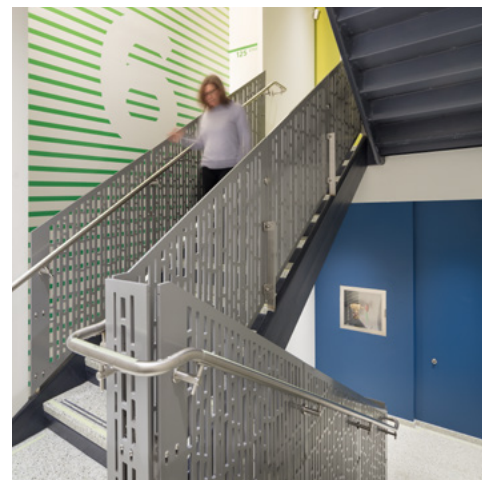
# NEW BUILDING

GPH's new, state-of-the-art home at 708 Broadway is located in historic Greenwich Village and the heart of downtown Manhattan, three blocks from Washington Square Park.

The building's prime location, combined with plenty of access to natural light and energy-efficient systems, creates a healthy environment that is conducive to collaboration among students, faculty and staff.

#### Building features include:

- An expansive 7500 square feet of space dedicated to students, including reservable quiet individual and group study rooms, lounge seating with charging stations and data ports, and a multipurpose area for symposiums and lectures
- A fully-equipped, three-level gym on the premises, including indoor bike storage
- 1200 square feet designated for clinical research, with temperature-controlled storage and a focus group meeting room
- Gender-neutral restrooms
- Filtered water fountains and bottle-filling stations on every floor
- Furniture built with sustainable materials
- Carpets made from recycled fishing nets



▼ A thriving, 30-foot long green wall in the lobby



▲ Ample study space with natural lighting



# ANTI-RACISM



Changing systemic and institutional racism is not something that can be done solely on an individual level. It's imperative that we move beyond statements and take concrete action as a school. I'm deeply committed to doing my part, and I hope you'll join me.

**Melody Goodman, Associate Dean for Research and Professor of Biostatistics**

Racism is recognized as a public health crisis, and the ultimate social determinant of health, by both the American Public Health Association and the Centers for Disease Control. At GPH we affirm that health is a human right, and we're actively working to build an anti-racism culture using curriculum, labs and applied practice opportunities.

The heart of our effort is the newly-established **Center for Anti-Racism, Social Justice & Public Health**, which will develop research, policies and model practices in a collaborative, scholarly environment. Our vision for the Center includes:

- An anti-racism and social justice symposium
- Quarterly seminars and training sessions
- A Center Scholars program featuring NYU faculty
- Pilot and supplemental grants
- Pathway programs to increase diversity in public health
- A visiting faculty program
- A pre-doctoral and post-doctoral fellows program
- A summer internship program

Building on these efforts are anti-racism activities at GPH such as:

- The student-led *Black Women's Health Collective*, which supports and encourages leadership roles for Black women in public health.



**Podcast: [Making Space in Public Health Through Intersectionality](#)**



**TRIUMPH (*Tackling Racism Institutionally and Urgently to Move Public Health*)**, a collective of Black GPH faculty and staff working to create a community that fosters justice, equity, diversity, and inclusion.

- Courses that address the social determinants of health, including Health and Human Rights; Justice in Health and Healthcare; Tackling Global Health Disparities through Implementation Science Research; and Criminalization, Punishment, and Public Health: A Critical Review.



**[Police Brutality and Reform Through a Public Health Lens](#)**

**[Through the COVID-19 Magnifying Glass: An Examination of Racial and SES Disparities in the United States](#)**

# RESEARCH

GPH's research enterprise is powered by the evidence-based inquiry of its renowned faculty in both behavioral and biological sciences. There are endless opportunities for engaged students to explore alongside our faculty innovators and to train with scholar-scientists who are generating new interventions every day that maximize public health.

**Research funding at GPH comes from a wide range of sources, including:**

- \$3.5 million from the National Institutes of Health to study the impact of multilevel interventions and improve preparedness against Covid-19 and other infectious diseases for NYC Transit and other public-facing workers.
- \$2.9 million from the National Institute of Mental Health and the NIH for a study of longitudinal trajectories in treated and untreated schizophrenia.
- \$3.3 million from the National Cancer Institute and the NIH to use Multiphase Optimization Strategy (MOST) to optimize a cost-effective, sustainable and scalable smoking cessation package for smokers in HIV clinical care.

**Join us as we move science out of the lab and into the world, translating knowledge into action that saves lives.**

**88**  
proposals submitted

**123**  
million in funding requests

**34**  
principal investigators

**103**  
active awards

# STUDENT LIFE

NYU GPH strives to provide an inclusive and diverse environment that fosters a culture of academic excellence. Students at GPH join a passionate community of learners who are dedicated to advancing public health both at home and abroad.

The **Student Governing Council** sponsors leadership development opportunities, including student-run clubs devoted to a variety of topics such as infectious disease, emergency preparedness, global nutrition, mental health, sexual and reproductive health, healthcare consulting and more.

The **Office of Student Affairs** offers a wide array of support services and wellness programs devoted to student success, such as tutoring and study groups; the Study Strong series during finals week; workshops on time management and stress relief; and access to NYU programs like the Writing Center and Speaking Freely for language learning.

**Career services** tailor-made for public health students include networking events, interview preparation, and individualized resume review through the NYU Wasserman Center for Career Development. A subscription to the Public Health Post, an exclusive weekly email newsletter, provides full-time, part-time, internship, and fellowship opportunities. And upon graduation, you'll join a network of 2500+ alumni pursuing careers in 42 countries.

**Enjoy benefits** available only to NYU students such as free admission to museums, discounted tickets to Broadway shows and movie theaters, and access to a fully equipped fitness center on the premises.



# NYC IS YOUR LABORATORY

[www](#)  
See the complete list

## LABS, CENTERS AND INITIATIVES

Choose from one of GPH's dynamic labs, centers and initiatives. Find opportunities to work side-by-side with faculty mentors, and contribute to innovative research that matches your interest and enhances your skills. Research projects can lead to many outcomes, from new publications to policy change. Examples include:

- Attachment and Health Disparities Research Lab
- Center for Drug Use and HIV Research (CDUHR)
- Measurement, Learning, & Evaluation Lab
- Center for Advancement & Dissemination of Intervention Optimization (CADIO)
- Disasters, Climate Change and Environmental Justice Lab
- SocioEconomic Evaluation of Dietary Decisions (SEED) program
- South Asian Health and Research (SAHARA) Initiative
- Tobacco Research Lab

## EMPLOYERS AND INTERNSHIPS

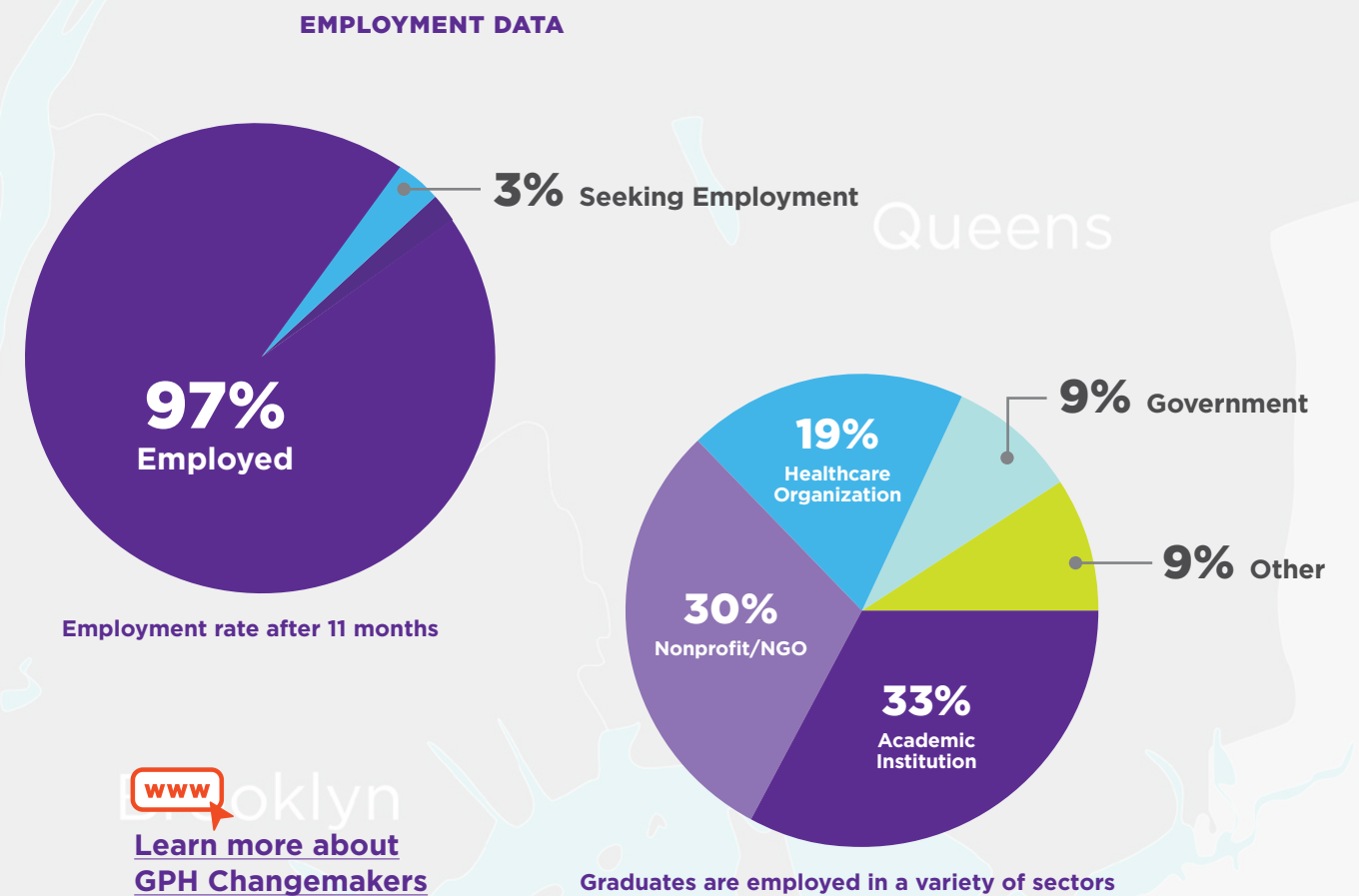
Bring your skills to life and advance your career with our extensive full-time or part-time internship and fellowship opportunities. Network with faculty who have long-standing connections to local and global health organizations. NYU's world-class culture offers meaningful and transformative experiences that can propel your studies and empower your career. GPH alumni have been employed by:

- Doctors Without Borders
- HealthRight International
- KPMG
- Memorial Sloan Kettering
- New York City Department of Health & Mental Hygiene
- NYC Health + Hospitals Corporation
- Pfizer Inc.
- RAND Corporation
- UNICEF
- World Health Organization

[www](#)  
See what we offer

## PUBLIC HEALTH CAREER HUB

Whether you want to track the causes of disease as an epidemiologist, monitor the outcomes of health services as a hospital administrator, or teach others how to avoid getting sick as a health educator, there's a career in public health that fits your unique skill set. Attend a job fair or visit our career hub for many exciting opportunities to put your public health skills into practice.



[www](#)  
Learn more about GPH Changemakers

Explore the Depth of Public Health with On-Demand Webinars

**NYU | GPH**

**Launching a Digital Health Startup with Ashlee Wisdom**

WEDNESDAY, MARCH 24 6-6:30PM ET

Ashlee Wisdom, MPH '18  
in cooperation with Mulanga Muofhe, MPH '09

LIVE WEBINAR

▶ Launching a Digital Health Startup with Ashlee Wisdom

**NYU | GPH**

**Police Brutality and Reform Through a Public Health Lens**

THURSDAY, SEPTEMBER 24 1-2:30PM EDT

LIVE WEBINAR

▶ Police Brutality and Reform Through a Public Health Lens

**NYU | GPH**

**THROUGH THE COVID-19 MAGNIFYING GLASS: AN EXAMINATION OF RACIAL AND SES DISPARITIES IN THE U.S.**

GPH-GU 2503 SPECIAL TOPICS SUMMER COURSE

LIVE WEBINAR

▶ Through the COVID-19 Magnifying Glass with Melody Goodman and Danielle Ompad

**NYU | GPH**

**What's At Stake? A Hispanic Heritage Month Conversation with Dr. Oxiris Barbot**

WEDNESDAY, SEPTEMBER 30 4-5PM EDT

LIVE WEBINAR

▶ Hispanic Heritage Month with former NYC Commissioner of Health Oxiris Barbot

**NYU | GPH**

**The Social Dilemma: Ethics of Technology and Its Impact on Public Health**

TUESDAY, NOVEMBER 17 7-8:30PM EST

LIVE WEBINAR

▶ The Social Dilemma: Ethics of Technology and Its Impact on Public Health

# GPH IN ACTION

Our faculty, students and alumni are conducting research and solving real-world problems that make headline news every day.



## GREEN ROADS TO ENVIRONMENTAL JUSTICE APPLIED GLOBAL PUBLIC HEALTH INITIATIVE

After deeming climate change and environmental equity a top priority, MPH students founded the Climate Change Task Force to create mitigation strategies through research, advocacy and external collaborations with community partners.

[www](#) [Green Roads to Environmental Justice](#)

## NATALIE DeGRAAF, MPH '13

Natalie mitigates the threat of biological agents through biosecurity and biosafety measures. Her team operates in hard-to-reach regions that pose a high risk for acts of terrorism, where U.S. government personnel may otherwise be restricted.

[www](#) [Natalie DeGraaf: Protecting the Future of Biosecurity](#)



## GUN VIOLENCE IS A PUBLIC HEALTH CRISIS

Learn from GPH faculty members Jennifer Pomeranz and Diana Silver how statewide authority over firearms policy has prevented local communities from passing their own laws—then see how that affects gun reform and efforts to combat mass shootings.

[www](#) [Most States Restrict Local Governments From Passing Gun Reform](#)

## MENTAL HEALTH AND RESILIENCE

Doctoral student Ariadna Capasso conducts a study on coping mechanisms among people with anxiety and depression, and faculty member Alexis Merdjanoff compares mental health repercussions on communities choosing to relocate vs. rebuild after disasters.

[www](#) [Anxiety, Depression and Drinking: An Unhealthy Combo During the Pandemic](#)

[When rebuilding no longer means recovery](#)



# DEGREE PROGRAMS

GPH's academic departments and graduate programs are regularly updated and expanded to keep current with the field, allowing for a flexible curriculum with both breadth and depth.

## MASTER OF PUBLIC HEALTH

- Biostatistics
- Community Health Science and Practice\*
- Environmental Public Health Sciences
- Epidemiology
- Global Health\*\*
- Public Health Nutrition\*
- Public Health Policy and Management
- Social and Behavioral Sciences
- Sustainable Development Goals\*

\*May be earned completely online

\*\*May be completed in an accelerated 12-month timeframe.

## MASTER OF ARTS

- Bioethics

## MASTER OF SCIENCE

- Biostatistics
- Epidemiology

## DOCTOR OF PHILOSOPHY IN PUBLIC HEALTH (PhD)

- Biostatistics
- Epidemiology
- Public Health Policy and Management
- Social and Behavioral Sciences

## DOCTOR OF PUBLIC HEALTH (DrPH)

## DUAL DEGREES

- NYU Medicine: MD / MPH
- NYU Dentistry: DDS / MPH
- NYU Public Service: MPA / MPH
- NYU Social Work: MSW / MPH
- NYU Nursing: MS / MPH

## ADVANCED CERTIFICATES

- Applied Global Public Health
- Health and Human Rights
- Implementation Science
- Public Health
- Public Health Data Science
- Public Health Disaster Science, Policy and Practice
- Public Health Nutrition

## UNDERGRADUATE CO-MAJORS

- Anthropology
- Applied Psychology
- Biology
- Chemistry
- Communicative Sciences and Disorders
- Food Studies
- History
- Liberal Studies
- Media, Culture, and Communication
- Nursing
- Nutrition and Dietetics
- Social Work
- Sociology

## ACCELERATED 4+1 PROGRAMS

- 4+1 BA Gallatin / MPH GPH
- 4+1 BA Gallatin / MS Biostatistics GPH
- 4+1 BS Steinhardt / MPH Public Health Nutrition GPH
- 4+1 BA Global Liberal Studies / MPH GPH
- 4+1 BA College of Arts & Science / MA Bioethics GPH

[www](#) [Learn more about your program of interest](#)

# AREAS OF STUDY

## Bioethics

### MA

Confront dilemmas at the nexus of policy and individual choice with first-rate training in analytical thinking. Strong links to one of the best philosophy programs in the world provide a foundation for navigating urgent public health questions with clarity and rigor.



[Listen to a broadcast with bioethicist S. Matthew Liao and astrophysicist Neil deGrasse Tyson.](#)

## Biostatistics

### MPH, MS, PhD

Collect, clean, sort and analyze data. Calculate key measures in research studies and offer data-based solutions to problems. Work in analytics for hospitals or pharmaceutical companies, and as teachers or research scientists.



[Check out our Consulting Lab, our Journal Club and our COVID-19 courses.](#)

## Community Health Science and Practice

### MPH

Design and evaluate strategies that promote health and reduce inequities among diverse populations. Focus on prevention with outreach programs, or manage public health departments, community health organizations, and health care systems.



[Collaborate with faculty in the Population Health Innovation Lab to design new ways to improve health.](#)

## Public Health Nutrition

### MPH

Fight undernutrition and disease using epidemiology, policy and research, or pursue the RD-MPH for clinicians. Work as wellness coordinators for healthcare organizations, researchers for NGOs, and nutrition educators for school systems.



[Collaborate with School of Medicine faculty and conduct research on food policy and health disparities with the SEED Lab.](#)

## Public Health Management

### MPH, PhD

Use budgeting, data analysis, and resource management to improve the financing and performance of healthcare organizations. Work for state and federal health departments, consulting firms, the pharmaceutical industry, or healthcare delivery systems.



[Read about the NYU Healthcare Consulting Organization student club to gain experience in consulting, policy and management.](#)

## Public Health Policy

### MPH, PhD

Evaluate strategies to advance the health equity of populations, especially vulnerable groups. Manage and improve program design in biotechnology, health insurance, investment banking and clinical care firms, in private or public sectors.

## Environmental Public Health Sciences

### MPH

Use epidemiology, toxicology, engineering or medicine to combat ecological threats. Perform environmental impact evaluations, collect data and advise on policy decisions, or contribute to disaster preparedness and response initiatives.



[Watch our Earth Day symposium on Climate Action in the Age of COVID-19.](#)

## Epidemiology

### MPH, MS, PhD

Understand the distribution and determinants of disease. Use both traditional and innovative approaches in key areas including social epidemiology, nutrition, HIV/AIDS and tobacco control. Work in academia or government, or with NGOs.



[Learn more about the popular Agent-Based Modeling Lab](#)

## Global Health

### MPH

Prepare for leadership positions in public or private sectors, with local or international organizations. Organize disaster relief efforts or design and implement health-related interventions. Consult on investment cases and advise on business models.



[Intern with the Nobel Prize-winning World Food Programme via our Applied Global Public Health Initiative.](#)

## Social and Behavioral Sciences

### MPH, PhD

Design behavior change interventions, run studies of health risks, or use sociological frameworks to understand people's health behaviors. SBS grads are highly desirable in academia, government, the private sector, and community or global organizations.



[Engage with our Center for Drug Use and HIV Research, which won a \\$4.8M NIH grant for a COVID-19 prevention model.](#)

## Sustainable Development Goals

### MPH

This fully-online MPH emphasizes multidisciplinary solutions to disease control and prevention efforts toward the United Nations' health-related Sustainable Development Goals. Achieve equitable and cost-effective results for ministries of health, international agencies, and NGOs.



[Take our innovative course in behavioral communication strategies that brings together GPH students and UN professionals.](#)



*I see the power of studying public health in the tools it gives you to understand how every conceivable aspect of yourself, those around you, the systems around you, and the world at large has an impact on health. This hasn't ever been more evident than during the COVID-19 pandemic.*

Shahmir Ali, PhD student



*My desire to impact the world's marginalized communities drove me to pursue a career in public health. My graduate experience at GPH made me more independent and gave me the confidence to shape my network.*

Bibi Ndala, MPH '19

# MASTER OF PUBLIC HEALTH

Increased life expectancy. An aging population. A rise in chronic disease. A deadly pandemic. Climate change. These are all fueling an unprecedented demand for public health experts. Jobs in healthcare are projected to grow 15 percent through 2029—more than any other field—according to the U.S. Bureau of Labor Statistics.

NYU GPH stands ready to help you achieve your professional goals, offering a wide range of options to prepare you for a dynamic, changemaking career in global public health.

**46**  
credits

**10**  
areas of study

**2**  
years full-time

**3 or 4**  
years part-time

Our MPH program spans six continents and offers nine areas of concentration, five dual-degree programs, and seven advanced certificates. Our award-winning faculty conduct groundbreaking research that gives you first-hand exposure to new knowledge and systems-changing solutions.

GPH harnesses interdisciplinary expertise across NYU's prestigious colleges and schools, and is located in one of the greatest cities in the world—New York City—with access to local, national, and international public health partners, and endless opportunities for networking and professional development.

NYU is your ticket to a world-class education with a global perspective, emphasizing equity and social justice through innovative policy and practice. **Join us as we reinvent the public health paradigm.**

## CONCENTRATIONS

- Biostatistics
- Community Health Science and Practice
- Environmental Public Health Sciences
- Epidemiology
- Global Health
- Public Health Nutrition
- Public Health Policy and Management
- Social and Behavioral Sciences
- Sustainable Development Goals (SDGs)

**“Public health practitioners work to solve epidemics from influenza to HIV, measles to polio, SARS to COVID-19—and most importantly, the structural racism that exacerbates them all among our most vulnerable communities.”**

—DAVID SATCHER, MD, PhD  
16th Surgeon General of the United States  
Former U.S. Assistant Secretary for Health

*Alumni highlight*  
**Michelle Rosa, MPH '19**

“

*My time here in the U.S. has been challenging and rewarding! I'm using my research background while pursuing more in-depth learning on international public health and biostatistics. GPH helps me enhance my professional skills, develop my leadership ability, and gain hands-on experience in research management.*




**APPLIED PRACTICE EXPERIENCE**


All concentrations in the MPH require an applied practice experience. This may be an internship or thesis through which students apply their knowledge and skills in unique, real-world settings for a minimum of 180 hours.

**GET PROFESSIONAL EXPERIENCE**

At GPH, classroom teaching is complemented by hands-on training; our students undertake internships/practicums in more than 30 countries around the world. This gives you the opportunity to gain public health work skills in a public or private organization. You'll choose your own field placement with NGOs, governmental agencies, multi-lateral institutions, community-based organizations or private sector companies both domestically and globally.

You'll have on-the-ground experience with public health challenges, gaining the problem-solving and practical skills you'll need in your career. As you work, you'll build professional contacts and networks, forging your unique professional path in public health.

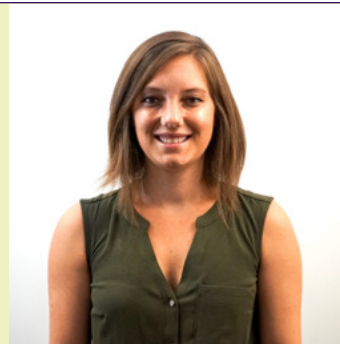

[Watch Honoring Indigenous Voices with Sutton King, MPH '20.](#)



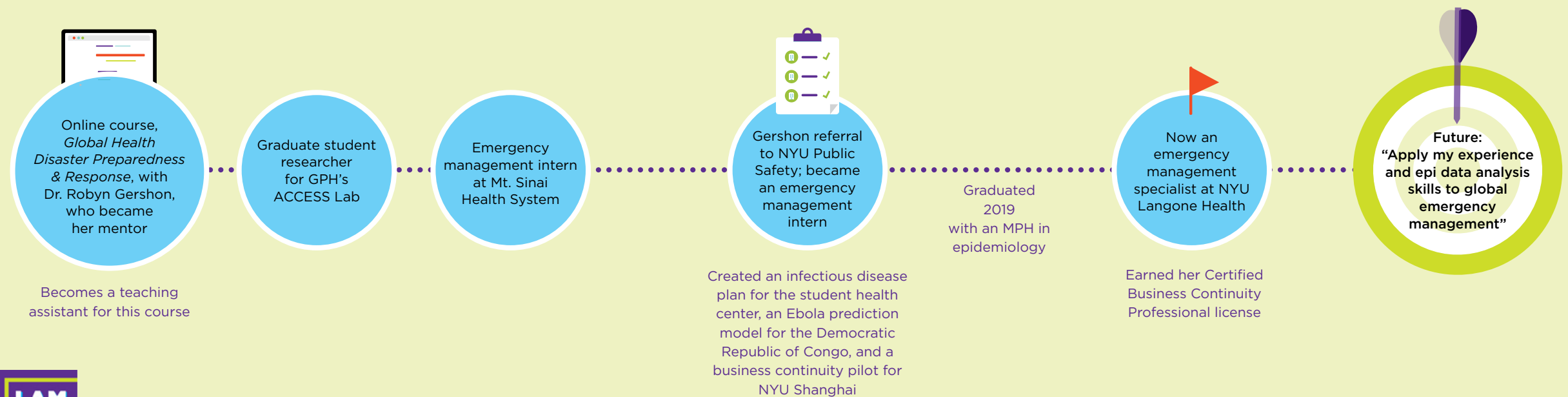

**DUAL DEGREES**

GPH is committed to public health education that crosses academic disciplines and integrates the best of what our graduate and professional schools have to offer. Dual degrees allow students to complete two separate degrees in program sequences of three, four, or five years.

- MD / MPH (School of Medicine): 4-5 years
- DDS / MPH (College of Dentistry): 5 years
- MPA / MPH (School of Public Service): 3 years
- MSW / MPH (School of Social Work): 3 years
- MS / MPH (College of Nursing): 3 years



**Rebecca Glenn**  
MPH '19  
A PUBLIC HEALTH JOURNEY



Hear Becca's story on the **I AM GPH** podcast



# MASTER OF ARTS IN BIOETHICS

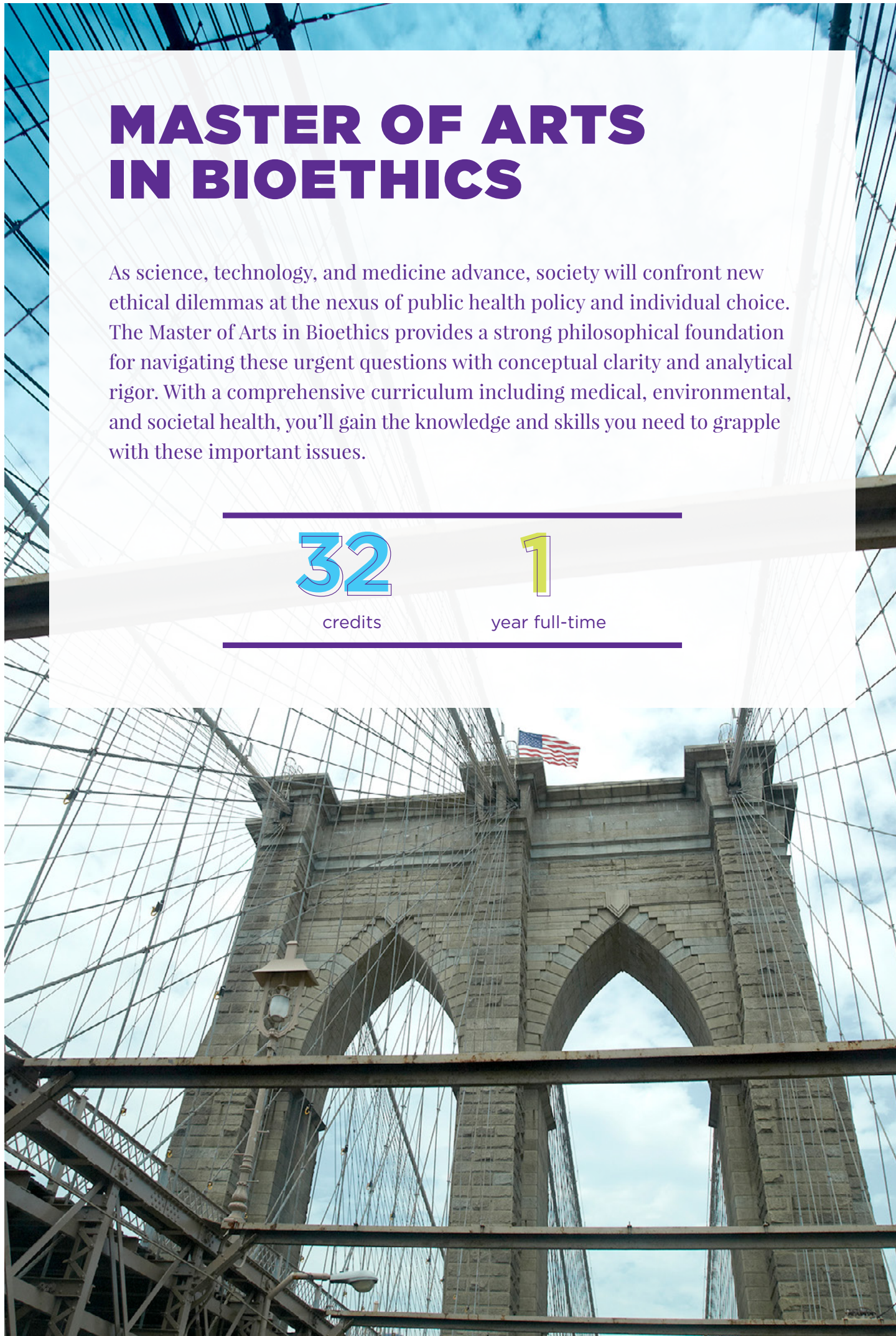
As science, technology, and medicine advance, society will confront new ethical dilemmas at the nexus of public health policy and individual choice. The Master of Arts in Bioethics provides a strong philosophical foundation for navigating these urgent questions with conceptual clarity and analytical rigor. With a comprehensive curriculum including medical, environmental, and societal health, you'll gain the knowledge and skills you need to grapple with these important issues.

# 32

credits

# 1

year full-time



## AREAS OF STUDY

- Clinical Ethics: Doctor/patient relationships, conscientious objection, beginning and end of life care, fair allocation of scarce medical resources
- Research Ethics: The use of placebos, conflicts of interest and clinical trials, research on animals and vulnerable populations, research in developing countries
- Global and Population Ethics: Global disparities in health and public health, global pandemics, population growth, human rights to health and health care, foreign aid and its critics
- Ethics of New Technologies: Embryonic stem cells, cloning, assisted reproductive technology, genetic engineering, synthetic biology
- Neuroethics: Cognitive and mood enhancements, addiction and criminal responsibility, borderline consciousness, neuroscience of moral decision-making, brain imaging technologies and mental health
- Environmental and Animal Ethics: Climate change, species preservation, biodiversity loss, ecosystem services, the use and misuse of animals, ethics of agriculture and food production



Listen to EP60 Bioethical Decision-making in Healthcare with Jamie Webb



### Alumni highlight

**Gennaro Selvaggi**

MD, PhD, MSc, MA IN BIOETHICS '18

Gennaro Selvaggi is a specialist plastic surgeon with a PhD in gender affirmation surgery from the University of Ghent in Belgium. He teaches plastic and reconstructive surgery in Sweden, where he also develops health policies and new techniques in gender affirmation surgery. Dr. Selvaggi's current research focuses on the ethics of innovation in healthcare; uterus and penis transplantation; hand transplantation in children; and justice in healthcare.



*The Bioethics faculty inspired me to pursue a new field: ethical issues in surgical procedures. My studies really helped me to understand the different viewpoints of every person I'm relating to; this in turn deepened my practice as a surgeon and had a strong impact on my personal growth.*

# MASTER OF SCIENCE IN BIostatISTICS

The Master of Science in Biostatistics trains students in study design, data analysis, and statistical reporting for scientific and lay audiences. Key skills include data management, statistical reasoning, the interpretation of numeric data for scientific inference, and the ability to collaborate and communicate effectively with scientists and other public health stakeholders across disciplines. Thematic areas of study include clinical trials, machine learning, and data science.

46

credits

2

years full-time

4

years part-time

Graduates of the program are prepared to work as statisticians in a variety of professional environments including government, academic, healthcare, and industry. In addition, students receive training in preparation for quantitative doctoral programs in public health, such as biostatistics and epidemiology.

#### Sample Courses:

- Psychometric Measurement & Analysis in Public Health Research & Practice
- Longitudinal Analysis of Public Health Data
- Machine Learning in Public Health
- Introduction to Agent-Based Modeling

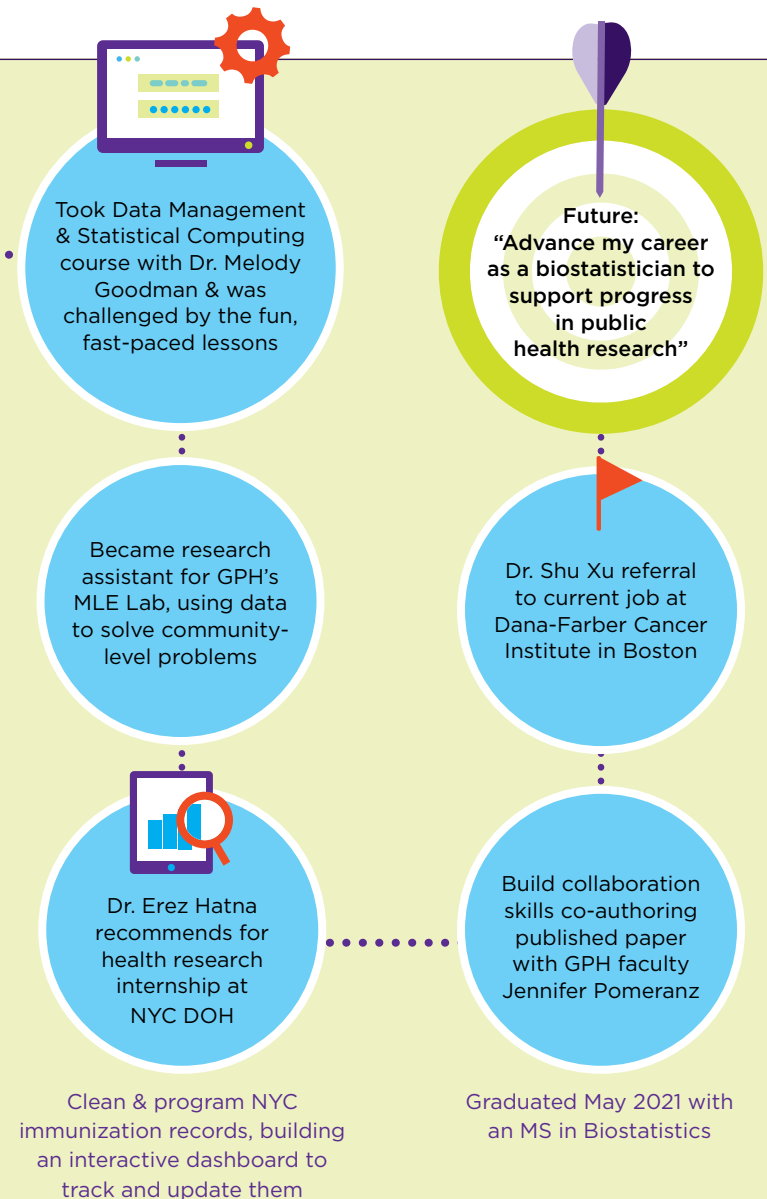


Watch a Symposium on *Biostatistical Contributions to COVID-19 Research*, featuring work by GPH students, alumni, and faculty.



Xiangying (Claire) Chu  
MS '21

#### A PUBLIC HEALTH JOURNEY



# MASTER OF SCIENCE IN EPIDEMIOLOGY

The Master of Science in Epidemiology is a research-focused degree that prepares students to analyze, interpret, model, and report on data from public health, health care, biomedical, clinical and population-based studies. Areas of study include general epidemiology, infectious disease, noncommunicable disease, and modeling. Graduates of the program can pursue doctoral-level studies in epidemiology, biostatistics, or other quantitative health fields.

# 46

credits

# 2

years full-time



The MS in Epidemiology can also serve as a terminal degree for those interested in working as a project director or data analyst in a wide array of research settings including government, academia, pharmaceutical companies, healthcare consulting, non-governmental organizations, and nonprofit and community-based organizations.

#### Sample Courses:

- Design, Conduct, and Analysis of Cohort Studies
- Disasters, Complex Systems, and the Social Ecology of Health
- Emerging Disease and Bioterrorism
- Detection and Control of Waterborne Pathogens



Listen to EP76 Championing Harm Reduction with Danielle Ompad



#### RESEARCH WITH A RENOWNED PIONEER OF AGENT-BASED MODELING (ABM):

Explore with Dr. Joshua Epstein how the ABM Lab uses behavioral science data to analyze how people respond to disease threats on models at all scales, from small idealizations (“toy” models) to full-scale, planetary pandemic models.



Learn more about Agent-Based Modeling with Dr. Joshua Epstein

# DOCTOR OF PUBLIC HEALTH / DrPH

The DrPH program focuses on training innovative leaders who will develop, implement, and disseminate evidence-based programs and policies to address global public health issues, framed by a health equity lens. GPH uses an interdisciplinary approach in its DrPH curriculum, with training in the areas of data and analysis; leadership, management, and governance; policy and programs; and education and workforce development. The program has a specialized focus on communication, collaboration, leadership, implementation science, and ethics.

**42**  
credits

**5-7**  
years full- or part-time

In addition to faculty mentors, the program provides coaching to every candidate, helping students develop hands-on leadership and professional skills under the guidance of experienced public health professionals.

## TIMELINE

A total of 42 credit hours is required for the DrPH, including 15 credits of electives. Students are expected to complete the degree within five to seven years, depending on previous academic coursework in public health, and whether the student is registered on a full-time or part-time basis.

<b>YEAR 1</b>	Coursework
<b>YEAR 2</b>	Coursework Applied Practice Experience
<b>YEAR 3</b>	Qualifying Exam Defend dissertation proposal
<b>YEAR 4/5</b>	Dissertation research and defense

# DOCTOR OF PHILOSOPHY IN PUBLIC HEALTH / PhD

GPH's rigorous Doctorate of Philosophy in Public Health program allows you to balance the theoretical with the practical, and the innovation with the application. You'll work under the guidance of esteemed faculty from NYU's global and interdisciplinary network on vanguard research and solutions to universal public health issues.

You'll further tailor your studies by selecting one of four areas of study—Biostatistics, Epidemiology, Social & Behavioral Sciences, or Public Health Policy & Management—to gain the innovative approach and aptitude you need to prepare for a successful future in academia and/or research.

## TIMELINE

Although the maximum allotted time to earn the degree is seven years, we expect most students to do so in four or five years. The sample timeline below assumes that you have completed the prerequisite courses prior to entering into the program; if you have not, another year of coursework would be added to this timeline.

<b>YEAR 1</b>	Coursework Systematic literature review
<b>YEAR 2</b>	Coursework Candidacy Exam (Summer after year two)
<b>YEAR 3</b>	Defend dissertation proposal

## Student highlight Temitope Ojo, PhD '22

“

*Pursuing a PhD is a huge, multi-year commitment. You have to be patient with the process, embracing twists and turns as an opportunity to learn. New ideas will always come around, and I love that the program evolves, with direct contributions from students to the process.*



# ADVANCED CERTIFICATES

**STACK YOUR CREDENTIALS AND BUILD A CAREER**

The World Economic Forum has called for a “Reskilling Revolution”—and public health is an ideal field for adapting to new jobs in new markets, uniting a wide range of disciplines and areas of expertise.

GPH’s Advanced Certificates are designed to help you launch your career—or switch to a new one. Whether you’re a recent graduate or a seasoned professional, our programs offer the versatility you need to navigate the future.



## WE OFFER ADVANCED CERTIFICATES IN

- Applied Global Public Health
- Health and Human Rights
- Implementation Science
- Public Health
- Public Health Data Science
- Public Health Disaster Science, Policy and Practice
- Public Health Nutrition

## TRANSFORM KNOW-HOW INTO CAN-DO

With online coursework and flexible scheduling, our student-centered classes in a connected, digital environment help you close your skills gap and be empowered to solve public health problems locally or globally.

GPH’s online learning system covers the same material as on-campus courses, with a variety of synchronous and asynchronous features such as:

- Threaded discussions with instructor responses and peer interaction
- Video lessons, interactive case studies and synchronized presentations
- Live faculty office hours and self-assessment quizzes with immediate feedback

Some credits earned toward Advanced Certificates will count toward our Master of Public Health degree and other GPH programs, or may even be transferable to graduate programs at other institutions.



# UNDERGRADUATE

NYU undergraduates who choose a co-major or minor at GPH are introduced to the global nature of public health, and gain a strong sense of its breadth and depth. They learn the ways in which populations and environments interact to shape health outcomes, and how their own career path can contribute to the effort.

By enrolling in one of GPH's 13 co-majors, students will draw upon courses from NYU's elite network of schools and academic disciplines. This unique structure responds to the ever-increasing demand for interdisciplinary public health practitioners both in the U.S. and abroad.

## UNDERGRADUATE CO-MAJORS

- College of Arts and Science
  - Anthropology
  - Biology
  - Chemistry
  - History
  - Sociology
- Rory Meyers College of Nursing
  - Nursing
- Silver School of Social Work
  - Social Work
- Liberal Studies
  - Global Liberal Studies
- Steinhardt School of Culture, Education and Human Development
  - Applied Psychology
  - Communicative Sciences and Disorders
  - Food Studies
  - Media, Culture, and Communication
  - Nutrition & Dietetics

Undergraduates co-majoring in Global Public Health are required to complete an Experiential Learning (EL) course in which they engage in hands-on, field-based activities designed to broaden their exposure to and understanding of public health. It is an opportunity to put what's learned in the classroom to work in the real world.

Students can choose to complete their Experiential Learning requirement as either a team-based experience, in which they tackle a public health issue affecting the NYU community around the Washington Square campus, or as an individual experience. Students may also complete their EL requirement at one of NYU's Global Network University sites by enrolling in specified courses at that site.

## ACCELERATED 4+1 PROGRAMS

Global threats such as infectious disease and climate change demand leaders who can generate both scientific and societal solutions. If you're a motivated undergraduate student looking to fast-track your graduate degree in public health, our accelerated 4+1 programs offer a way to earn both a bachelor's and master's degree in only five years, saving both time and tuition.

Students admitted to the program take undergraduate classes for their first three years. As seniors, they combine bachelor- and master-level courses and graduate with a bachelor's degree. In the fifth year, they focus solely on graduate courses to complete their MPH.

Choose from one of our accelerated programs such as:

- 4+1 BA Gallatin / MPH GPH
- 4+1 BA Gallatin / MS Biostatistics GPH
- 4+1 BA Global Liberal Studies / MPH GPH
- 4+1 BS Steinhardt / MPH Public Health Nutrition GPH

GPH's 4+1 program is also ideal for students seeking additional preparation before applying to one of our doctoral programs in public health, as well as for those pursuing other career tracks (such as teaching) in which a master's degree is valuable.



**Supriya Lal**  
BA '19, MPH '21

### A PUBLIC HEALTH JOURNEY



# ADMISSIONS

**NO GRE IS REQUIRED AND MERIT SCHOLARSHIPS ARE AVAILABLE.**

Take advantage now of the exciting opportunities and outstanding resources at NYU GPH! The GPH admissions team is ready to work with you one-on-one.

Learn more about GPH by speaking with students and faculty, visiting a class, or making an appointment with admissions staff. We're committed to helping you discover how a degree from NYU GPH can help you meet your academic and professional goals.

## APPLICATION REQUIREMENTS

- **Completed SOPHAS application** (the centralized application service for public health schools and programs)
- **Resume or CV**
- **Personal statement**
- **Official transcripts** from each college or university attended
- **Three letters of recommendation**
- **Writing sample** (doctoral programs only)
- **English language exam scores** from all applicants whose native language is not English and who did not receive the equivalent of a U.S. bachelor's degree at an institution where English is the primary language of instruction

**Most programs admit students for the fall term. Fall admissions open in August and applications are due by February 1st. For programs that admit students for the spring term, applications are due by December 15th.**



**Our world needs public health professionals now more than ever.**

Are you ready to answer the call?



[Join an upcoming online info session](#)  
[Schedule a one-on-one advising session](#)

*We need a public health workforce that brings their heart and soul into the work, that brings their equity lens into the work, that will help move the field, and move our country to be more just and equitable when it comes to health outcomes.*

Dr. Oxiris Barbot, former member of the GPH Advisory Board and former NYC commissioner of health







**NYU**

**SCHOOL OF GLOBAL  
PUBLIC HEALTH**

708 Broadway

New York, NY 10003

[gph.admissions@nyu.edu](mailto:gph.admissions@nyu.edu)

[publichealth.nyu.edu](http://publichealth.nyu.edu)



**reinvent**

**THE PUBLIC HEALTH PARADIGM**